



300
MILLION
Reasons...



2024: The Year Ahead & How to Get There

HEPATITIS B POLICY PRIORITIES



FEDERAL FUNDING FOR HEPATITIS B AND LIVER CANCER

- Appropriations Advocacy (CDC, NIH)
- The LIVER Act



PREVENTION: HEPATITIS B SCREENING AND VACCINATION

- Expanding Hepatitis B Screening
- Increasing Adult Hepatitis B Vaccination



TREATMENT ACCESS

- Ensuring affordability and access to hepatitis B treatments



ENDING HEPATITIS B-RELATED DISCRIMINATION

- Health Care Students and Professionals
- U.S. Military

HEALTH EQUITY

- Health Equity and Accountability Act (HEAA)
-

How the US funds public health

Federal funding

State funding

Mandatory (spending allowed by previously passed law)

Discretionary (levels set annually by Congress)

State budget (levels set by state legislature)

Medicaid, Medicare, Social Security

Federal departments and agencies (HHS)

State programs (Departments of Health)

Administrators (federal, state, or both)

Beneficiaries, patients, providers (paying for healthcare, etc.)

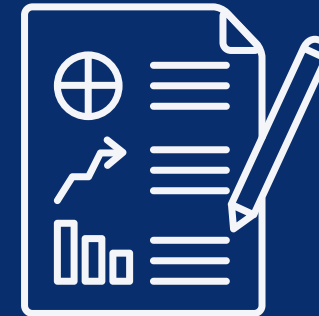
Local recipients (community health centers, community-based organizations)

BEFORE PLANNING

ASSESS THESE 3 KEY AREAS



Organizational Capacity - mission, resources, experience, partnerships, stakeholders and other connections



State Statistics - key demographics; HBV infection, mortality, vaccination; liver cancer rates; risk factors



Personal Stories (Local Impact) - engage with storytellers, people with lived experience, and influential members of affected communities in your state

DEVELOPING A PLAN

PRIORITIZE TO MAXIMIZE IMPACT



Define a goal

Map plan's trajectory

Determine who holds power

Organize resources and partners

Create a campaign plan and timeline

Setting Your Advocacy Stage

Familiarize yourself with your state's legislative process to make advocacy as easy as possible!

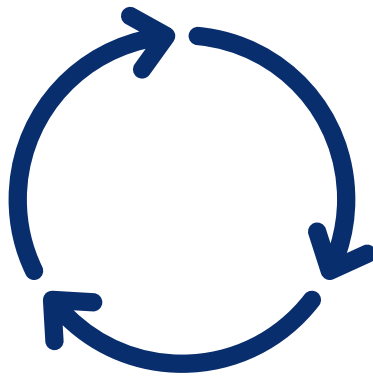
Analyze Your Landscape

- When is my state legislature in session?
- Who are the legislators for my organization's district?
- What committees are my legislators involved in?
- What committees are helpful for my advocacy purposes?
Who is on those committees?



Know The Process

- When does the fiscal year begin and end?
- Is the budget cycle annual? Biennial?
- What are key dates in the budget cycle?



Follow The Money

- What is the typical annual budget for my state?
- How much money has been given to hepatitis B (or viral hepatitis, or hepatitis C) in the past?



Building Blocks

- Is there current legislation that hepatitis B advocates can build off of? That they can use as a template for new legislation?
- Points of reference: HIV, hepatitis C
- Key words: hepatitis B, viral hepatitis, liver cancer, STDs/STIs



WHAT DO STATE LEGISLATURES HAVE IN COMMON?

Most legislatures are bicameral.

This just means they have two chambers. The exception is Nebraska, with a single legislative chamber.

- "Lower" chamber: House or Assembly
- "Upper" chamber: Senate

Legislative sessions start at the beginning of the (calendar) year.

Most legislatures start in January or February. Legislators use the months right before the session to collect ideas for bills. If you have an idea for legislation that you would like introduced, you need to start right after an election.

The committee process is extremely important.

Before going to a chamber, bills must pass through specialized committees of jurisdiction, where amendments are made. Each committee has a chairperson who exerts a great deal of control over what happens in the committee by deciding things like which bills get heard, which ones never get brought up, and the schedule it all happens on.

WHAT MAKES STATE LEGISLATURES DIFFERENT FROM EACH OTHER?

Session length

State legislative sessions range from 30 days every other year to year-round. Only nine states have full-time legislatures; the rest meet part-time, with some states only meeting in odd-numbered years.

- Full-time: CA, MI, NY, PA, AK, HI, IL, MA, OH, WI
- Odd years: MT, NV, TX, ND

Legislative process

For example, bills can usually originate in either chamber, and then cross over to the other. However, in some states, appropriations bills must start in the lower house and then move to the upper house. Other states have deadlines on how long a bill can spend between being introduced and passing through a committee.

Numbers of representatives & amount of resources and staff they have

A single legislative chamber could have as few as 20 members to as many as 400. Legislators in some states may have offices in their home districts as well as at the state capital, while in other states, they may only have capital offices.

EXAMPLES OF ADVOCACY TACTICS

Meet with Legislators and Develop Champions

- Schedule (virtual) district office visits
- Organize a legislative advocacy day at the State Capitol
- Invite your legislators to your events or arrange a site visit
- Participate in town halls
- Attend local public events
- Ask questions at candidate forums

Impact the Committee Process

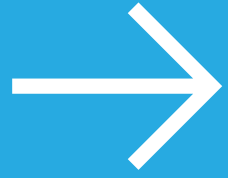
- Submit written letters of support or opposition to relevant committee(s)
- Give public testimony at a legislative hearing

Meet with Executive/ Administrative Offices and Build Relationships with Key Staff

- Governor's Office
- Department of Health
- Insurance Commissioner

Push for Local Media Coverage

- Send photos to reporters and photo editors at local papers and TV stations
- Send out a press release
- Tweet at reporters
- Share on social media
- Publicize milestones and awards
- Submit op-eds
- Keep a good archive of photos and videos
- Train storytellers and other spokespersons



Find What You Need

Urban Institute

State-specific briefs on how budgeting is handled in the state

MultiState

Legislative calendars for each state.

Ballotpedia

Session calendar, number of members and legislative districts, budget cycle

Committee For A Responsible Budget



Legiscan

National database to find all bills related to a certain topic, such as "hepatitis B" or "liver cancer"



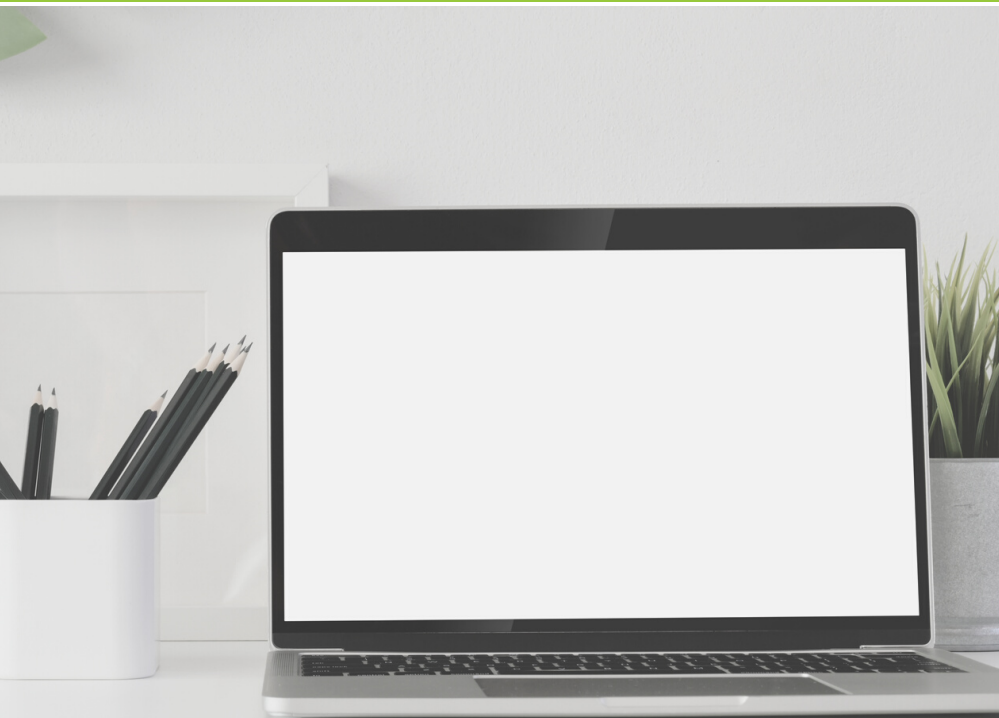
Grant Funding Profiles by CDC

Breakdown of state by state funding provided by the CDC. Viral hepatitis is a lumpsum



State Dependent Information

- "Find my state legislator" - District maps
- State budget - current or former
 - Funding levels
- "(State name) House/Senate committee"
- "Rep. Matthew Bradford committees"
 - Specific legislator's committee placement
- <https://openstates.org/>



Want to learn more or become more engaged in state advocacy?

Contact: advocate@hepb.org

www.hepbunited.org/action | www.hepb.org



300
MILLION
Reasons...



DISCUSSION / Q&A